

Boots & spurs, hats & chaps, it's all a part of the lore.

Texas is another world with wide open spaces galore.  
From Panhandle vistas to sandy Gulf shores.

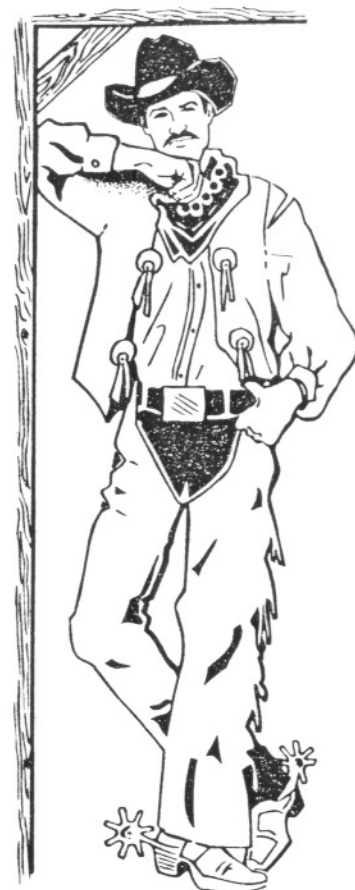
Pine trees to Big Bend, there's so much more.

TEXAS IS UNIQUELY DIVIDED INTO SEVEN GEOLOGICAL REGIONS.

We'll be waiting in the middle one,  
the pretty Hill Country of Texas in Spring!

# JOIN US for the 2010 AACA SENTIMENTAL TOUR

Limited to vehicles 1928 through 1958.



## MARCH 21-26 in Kerrville, Texas

Hosted by the Central Texas Region AACA, Austin, Texas

Headquarters: Y. O. Ranch Resort Hotel\*



You're in for an adventure when you attend the 2010 Sentimental Tour.

Everything is BIGGER in Texas. ★You can visit the Y.O. Ranch, a working ranch since 1880 that is 40,000 acres of Texas Longhorns, cowboys and exotic animals.

★Farther away, the King Ranch, located in the South Texas Plains Region covers 825,000 acres and 5 counties, and ... is larger than Rhode Island.

★Even disasters are BIGGER. A hurricane caused the worst natural disaster in U.S. history in 1900 in which over 8,000 lives were lost on Galveston Island, Texas.

**It ain't braggin' if it's true!**

\*Not at the ranch. Boots and hat not required.

